

SPLITS SYSTEM

Direct Expansion

Devices to perfectly fit
all cellar architectures



WineSupervisor 3

Your Cellar, Connected

Compatible with all Friax Céos and Vintage
Accessible from all your devices
Web - Smartphone - Tablet



Remote control

Monitor temperature and humidity in real time so you never miss a change in the storage atmosphere of your bottles. Take control remotely and adjust the settings.



Conservation history

The WineSupervisor 3 allows you to keep a complete history of the cellar atmosphere and the operating periods of Friax air conditioners. Insurance and proof of the good conservation of the bottles.



Mapping of your facilities

If you are user or installer in charge of site maintenance, find all your cellars on the map and be informed of their operating status directly on your smartphone screen.



Configurable alarms

Configure and receive real-time alarms to intervene when needed. Keep track of all events in the cellar. Give access to your technician for proper maintenance.

A la carte subscription formulas so that **WineSupervisor 3** and its connected interface can increase the functionality of your Friax

BASIC Formula

Free, included for life with WS3*
-Visualization of T and Hr%** values
-Live alarms

DEGUSTATION Formula

1 year free on commissioning then subscription or switch to BASIC***
-Visualization of T and Hr%** values
-Live alarms
-Expert Mode
-Curves of the different functions
-3 years of history
-Remote control
-Connected lighting
-Connected silent mode
-Maintenance access

API Formula

Subscription or automatic switch to BASIC***
-Visualization of T and Hr%** values
-Live alarms
-Expert mode
-Curves of the different functions
-10 years of history
-Remote control
-Connected lighting
-Connected silent mode
-Maintenance access
-Export of values for complete traceability of bottles over time

Also available in a Modbus version for integration into an existing supervision

Code	Description
KWSP-I	WineSupervisor I Kit - Modbus Version
KWSP-III	WineSupervisor 3 Kit - Connected Version

*Requires the installation of a WineSupervisor 3 box

** For Ceos and Vintage models

*** Annual settlement. If you decide not to renew your subscription, the switch to the free BASIC formula is done automatically, you stay connected!



The Friax splits system consist of:

- A condensing unit with design and dimensions of which may vary depending on the powers and the chosen condensing mode (air or water).
- One or more evaporators adapted to each location geometry.
- An integrated regulation depending on the model selected.
- A wireless remote controler.



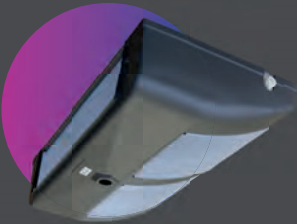
Condensing units p 42

Different characteristics depending on the model.



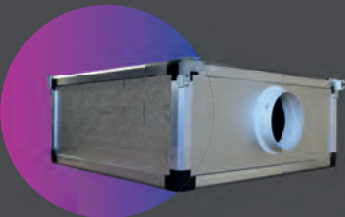
Wall mounted EVX p 46

The EVX wall mounted split system fits easily into your cellar decor.



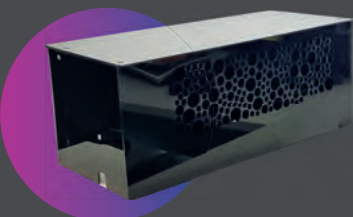
Ceiling mounted EVPL p 50

The EVPL ceiling mounted split system covers a wide range of use with 2 finishes and 6 available sizes.



Ductable EVG/EVI p 54

The configuration of the EVG / EVI splits system allows them to be completely hidden from view so that only the bottles are visible.



Cabinet EVA p 58

The EVA split system let you express your creativity by easily integrating into any custom cabinet you could imagine.

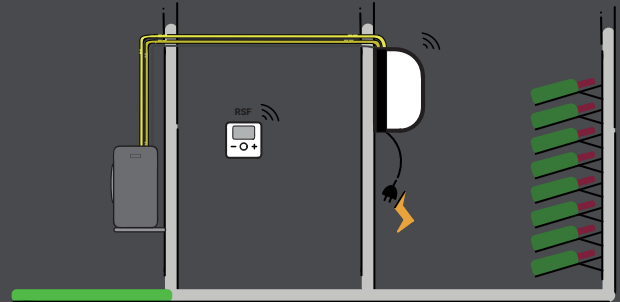
Condensing Units

The condensing units of the Friax splits system are available in 3 different versions depending on the size and constraints:

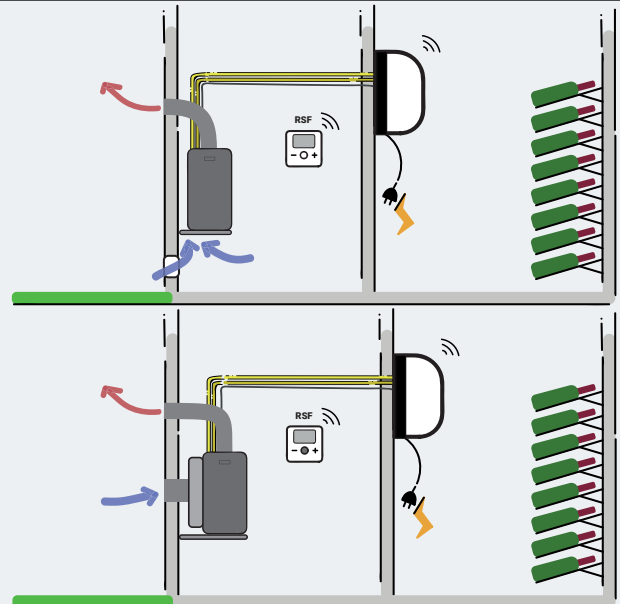
- **GCH** units for air-cooled splits from size 30 to 230
- **GCG** for ducted air condensing splits from size 30 to 230
- **GCW** units for water-cooled splits from size 30 to 230.

Which condensing unit to use, GCH - GCG or GCW?

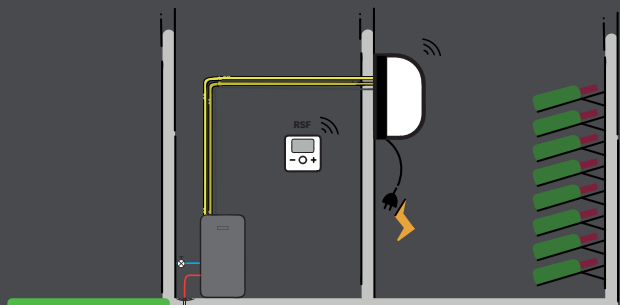
GCH For installations outside buildings. These are the most commonly used. Splits of sizes 30 to 230 are equipped with these new condensation units. Their aesthetic and modern design allows for more practical installation and maintenance.



GCG When the air conditioning environment does not allow the unit to be placed outside, it may be advisable to install it inside the building in a technical room away from the cellar. Friax has developed the **GCG** ducted air condensing units to meet this demand. To avoid renewing the air in the room and to avoid changing its temperature, the use of a **KBPL-GCG** plenum is necessary. It is installed directly at the unit's suction. Associated with a return duct, the suction is done directly on the outside.



GCW If no solution with a ventilated group is possible, Friax offers its new **GCW** water condensation units. Installed inside the building in a technical room separate from the cellar, the **GCW** groups can be connected to a chilled water loop, a cooling tower or to lost water on the city water network.



GCH air-cooled condensing units for 30 to 230 splits



The 30 to 230 splits with outdoor air condensation are equipped with the new **GCH** units.

The **GCH** units consist of a painted galvanized sheet metal frame and a body covered with two-tone paint intended for outdoor installation.

They are equipped with a EC elicoid fan, liquid tank, a liquid line with dehydrator and sight glass. Flare valves are provided for the refrigerant connection.



The safety of the unit is ensured by high and low pressure cartridge pressure switches. The **KPC** condensation temperature control allows the refrigeration system to operate properly in summer and winter.

The compressor receives a regulated **RC** crankcase resistor to ensure its protection when the Friax split is working in heating mode. The electrical connection is made on a sealed electrical box. The condensing units are pre-charged with refrigerant.

Access to the electrical part is made easy thanks to the door located on the side of the unit.

The hinged cover simplifies commissioning and maintenance operations.

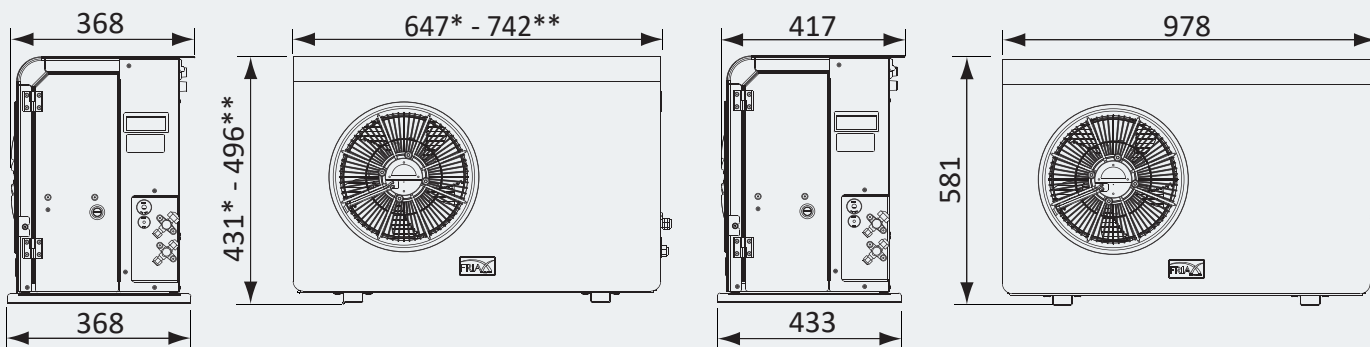
The sound insulation of the unit can be reinforced with a **BNS** kit.

(see split accessories).



SPC 30* - 48* - 82** - 122**

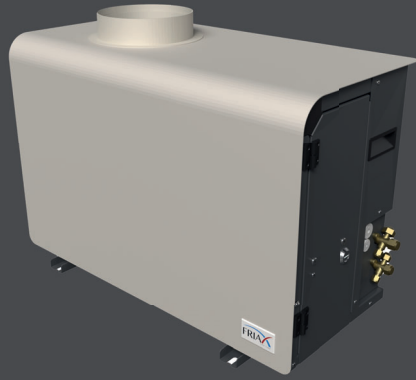
SPC 170 et 230



Technical characteristics

GCH 30 - 230 units	SPC	30	48	82	122	170	230
Cooling capacity Tevap 0°C Text 32°C	W	780	1130	1470	2370	2750	3440
Voltage	50Hz	230 V/1+T	230 V/1+T	230 V/1+T	230 V/1+T	230 V/1+T	230 V/1+T
Intensity absorbed	A	3.98	4.96	6.38	5.97	6.38	7.52
Power absorbed	W	571	724	912	1194	1351	1491
Air flow	m3/h	1100	1250	1400	1550	1170	1460
Sound pressure level at 5m without BNS	dB(A)	32	40	41	43	51	51
Sound pressure level at 5m with BNS	dB(A)	29	37	38	40	48	48
Suction gas connection (Flare)	Φ	3/8"	3/8"	3/8"	1/2"	5/8"	5/8"
Liquid gas connection (Flare)	Φ	1/4"	1/4"	1/4"	1/4"	3/8"	3/8"
Net weight	Kg	36	38	54	57	63	63
Body color	RAL7016 + anodic Grey Natura						
Refrigerant		R513A	R513A	R513A	R513A	R513A	R513A
Pre-loaded for	m	6	6	6	6	6	6

GCG ducted air condensing units for 30 to 230 splits



The 30 to 230 splits with ducted air condensation are equipped with the **GCG** units.

The **GCG** units consist of a painted galvanized sheet metal frame and a body covered with two-tone paint intended for indoor or outdoor installation.

They are equipped with a variable speed EC centrifugal fan (maximum static pressure of 100 Pa), duct connection Ø200 mm, a liquid tank, a liquid line with deshydrator and sight glass. Flare valves are provided for the refrigerant connection.

The safety of the unit is ensured by high and low pressure cartridge pressure switches. The **KPC** condensation pressure regulation allows the refrigeration system to operate properly in summer and winter.

The compressor receives a regulated **RC** crankcase resistor to ensure its protection when the Friax split is working in heating mode. The electrical connection is made on a sealed electrical box. The condensing units are pre-charged as standard with refrigerant for a 6m connection.

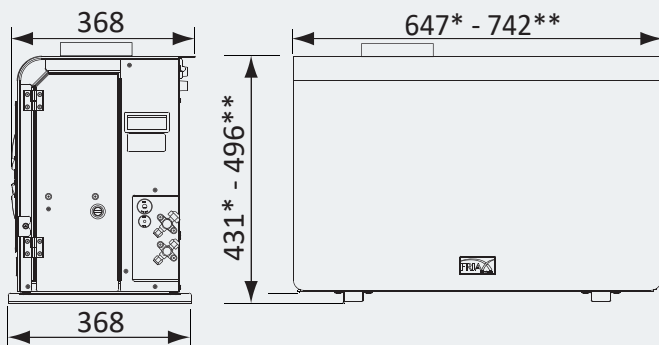
A **KFG-GCG** plenum is available as an accessory when the unit must be connected to a fresh air intake duct.

The sound insulation of the unit can be reinforced with a **BNS** kit. (see split accessories).

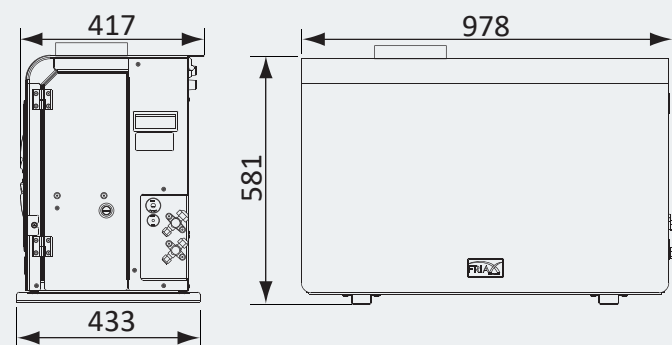


SPC 122 GCG + KFG-GCG82-122

SPC 30* - 48* - 82 - 122****



SPC 170 et 230



Technical characteristics

GCH 30 - 230 units	SPC	30	48	82	122	170	230
Cooling capacity Tevap 0°C Text 32°C	W	780	1130	1470	2370	2750	3440
Voltage	50Hz	230 V/1+T	230 V/1+T	230 V/1+T	230 V/1+T	230 V/1+T	230 V/1+T
Intensity absorbed	A	3.98	4.96	6.38	5.97	6.38	7.52
Power absorbed	W	596	749	937	1219	1351	1491
Air flow	m3/h	1100	1250	1400	1550	1170	1460
Sound pressure level at 5m without BNS	dB(A)	32	40	41	43	51	51
Sound pressure level at 5m with BNS	dB(A)	29	37	38	40	48	48
Suction gas connection (Flare)	Φ	3/8"	3/8"	3/8"	1/2"	5/8"	5/8"
Liquid gas connection (Flare)	Φ	1/4"	1/4"	1/4"	1/4"	3/8"	3/8"
Net weight	Kg	36	38	54	57	63	63
Body color	RAL7016 + anodic Grey Natura						
Refrigerant		R513A	R513A	R513A	R513A	R513A	R513A
Pre-loaded for	m	6	6	6	6	6	6

GCW water-cooled condensing units for 30 to 230 splits

The 30 to 230 splits with water condensation are equipped with **GCW** units. **GCW** units consist of a galvanized sheet metal frame and a body coated with two-tone paint. They are installed under shelter in a frost-free environment.

They are not thermally insulated and therefore cannot be installed in the cellar. They are equipped with a liquid line with dehydrator and sight glass. Flare valves are provided for the refrigeration connection.

The safety of the unit is ensured by high and low pressure pressure switches with HBP cartridge. Condensation pressure regulation is ensured by a VEP pressostatic water valve to be adjusted when the unit is commissioned. It ensures the proper functioning of the system in summer and winter and optimizes the consumption of devices connected to city water. GCW units can also be connected to chilled water networks when the sites are equipped with them.

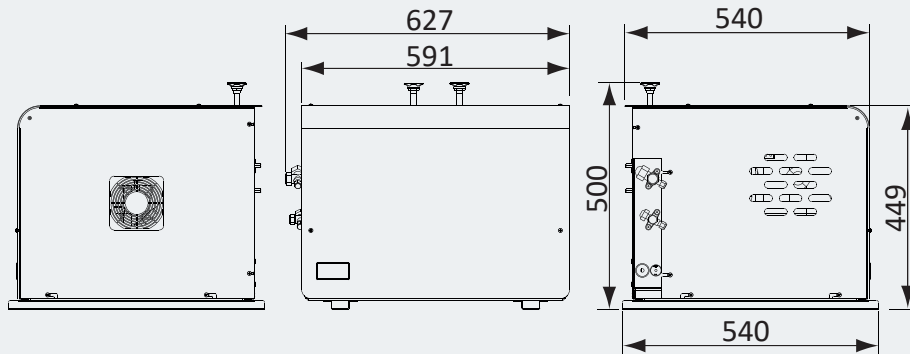


The electrical connection is made on a sealed electrical box. The condensing units are pre-charged with refrigerant fluid for a 6m connection.

The sound insulation of the unit can be reinforced with a BNS kit. (see split accessories).



SPC 30 - 48 - 82 - 122 - 170 - 230



Les groupes à eau doivent être installés dans un local dont la température est supérieure à 0°C.

Technical characteristics

GCW 30 - 230 units	SPC	30	48	82	122	170	230
Cooling capacity Tevap 0°C	W	780	1130	1470	2370	2750	3440
Voltage		230 V/1+T	230 V/1+T	230 V/1+T	230 V/1+T	230 V/1+T	230 V/1+T
Intensity absorbed	A	2.49	3.47	4.89	4.48	4.89	6.03
Power absorbed	W	400	533	741	1023	1150	1290
Sound pressure level at 5m	db	37	40	40	40	47	47
Suction gas connection (Flare)	Φ	3/8"	3/8"	3/8"	1/2"	5/8"	5/8"
Liquid gas connection (Flare)	Φ	1/4"	1/4"	1/4"	1/4"	3/8"	3/8"
Water connection	Φ	2 x 1/2" M	2 x 1/2" M	2 x 1/2" M	2 x 1/2" M	2 x 1/2" M	2 x 1/2" M
Net weight	Kg	36	38	54	57	60	70
Body color		RAL7016 + anodic Grey Natura					
Refrigerant		R513A	R513A	R513A	R513A	R513A	R513A
Pre-loaded for	m	6	6	6	6	6	6

WALL MOUNTED EVX2

SPLITS SYSTEM



The evaporators of the EVX2 splits are positioned against the wall of the cellar. The regulation controller is integrated inside the evaporator to allow a direct connection of the unit without going through a connection box.

The customizable design of the evaporator allows it to integrate well into all styles of cellars.

Vintage finish



The Vintage version integrates, in addition to the cold, the HGR% humidification system and heating to limit the temperature differences between the seasons and best protect the wine. The humidification system makes it possible to raise the humidity without adding heat and does not require demineralised water with a softener. The use of a KLPWSECU kit will facilitate and secure its connection to the water network.

Customizable



The modern and sleek design of this cellar air conditioner can be personalized so that each wine cellar becomes unique. The interchangeable colored front allows endless possibilities. The EVX2 split comes standard with a glossy black front.

Remote control RSF2 new generation



This is the simplest solution to take control of your cellar conditioner. With the wireless radio frequency remote control RSF2, no more distance problem, the signal passes through walls. You can control your cellar right up to your kitchen. On Vintage models, it displays temperature and humidity.



WineSupervisor



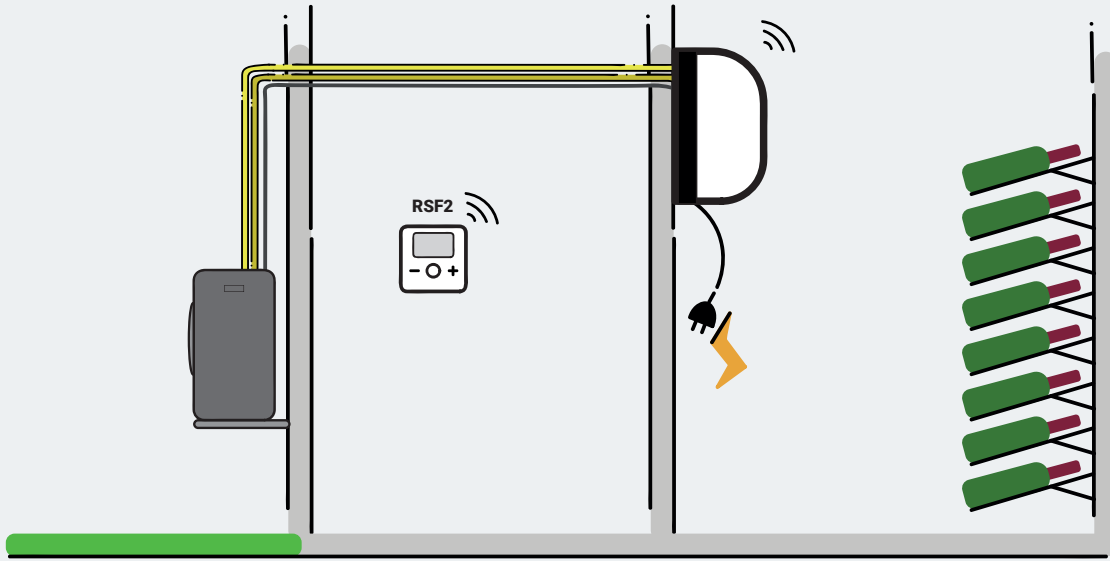
This is the connected solution. Whatever your environment, Friax offers the solution to remain constantly connected to your cellar. Using the KWSP-I kit, you connect to the supervision of your home through a Modbus protocol. The KWSP-III solution allows you to obtain all the essential information about the cellar for life using a tablet or smartphone.



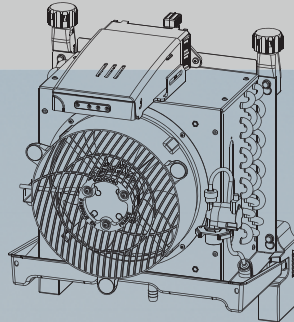
WALL MOUNTED EVX2

The wall mounted split solution

EVX2 evaporators blend discreetly into the cellar decor and in middle of the bottles by simply attaching to the wall.



Also available in an **integrated version** without bodywork



In its integrated version, EVX2 can be installed directly in prefabricated wooden or concrete cellar elements. A personalized front will make it possible to forget it!

Consult us for your projects



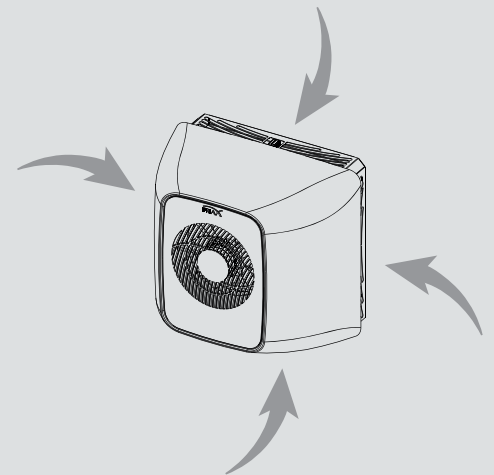
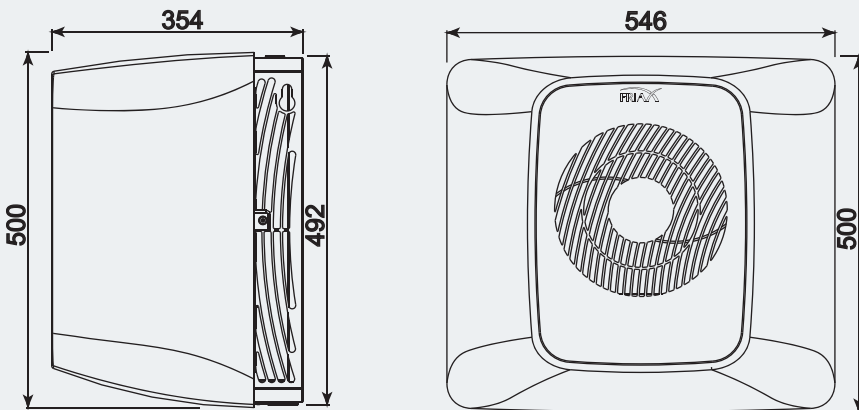
WALL MOUNTED EVX2 - Description

Vintage Evaporator

Cooling – Heating - Humidification

- Wall mounting in the cellar
- Cellar side white ABS body
- Customizable Front
- Flare refrigeration connection outside
- Thermostatic expansion valve
- **CWR** (Cold water recycling)
- Front panel operation and alarm indicators
- Integrated electrical box
- EC ventilation
- **RSF2** wireless radio remote control
- Display of the temperature and the various functions of the device
- **KCH** integrated heating
- **KHGR%** integrated humidifier
- Evaporator Nitrogen pressurized

EVX2 evaporator dimensions









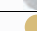


The EVX must be installed far enough from obstacles to allow air intake on its periphery.

WALL MOUNTED EVX2

Technical characteristics

<i>Wall Mounted EVX2 Vintage</i>	SPC	30	48
Cooling capacity 12°C / 32°C ext.	W	780	1130
Heating capacity on Vintage	W	800	800
<i>EVX2 evaporator characteristics</i>	SPC	30	48
Voltage	50Hz	230 V / 1+T	230 V / 1+T
Cooling Intensity absorbed	A max	0.8	0.8
Heating Intensity absorbed	A max	4.3	4.3
Fan	Quantity	1	1
Air flow	mh/3	452	452
Suction gas connection (Flare)	Φ	3/8"	3/8"
Liquid gas connection (Flare)	Φ	1/4"	1/4"
Net weight	kg	18	18
Body color		Black/White	Black/White
Refrigerant		R513A	R513A
<i>EVX2 Condensing unit characteristics (see p 40)</i>	SPC	30	48
Air condensing unit	Type	GCH30	GCH48
Ductable air condensing unit	Type	GCG30	GCG48
Water condensing unit	Type	GCW30	GCW48
Wall mounted split EVX2 air condensing unit	<i>Item code</i>	SPC30_HEVX2_VTX	SPC48_HEVX2_VTX
Wall mounted split EVX2 ductable air cdg unit	<i>Item code</i>	SPC30_GEVX2_VTX	SPC48_GEVX2_VTX
Wall mounted split EVX2 Water condensing unit	<i>Item code</i>	SPC30_WEVX2_VTX	SPC48_WEVX2_VTX

Customization

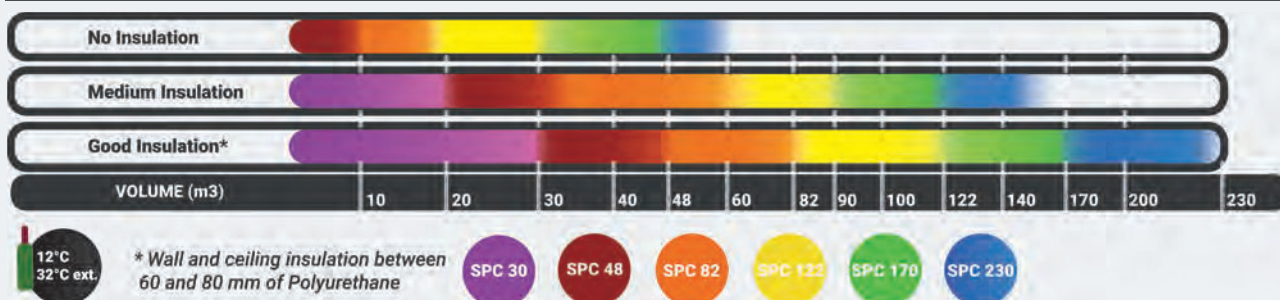
Code	Description	Compatibility	Infos
 KFXJ-CEDRE	Cedar Wood color custom front	X	p65
 KFXJ-ROUGE	Lipstick Red color custom front	X	p65
 KFXJ-BLEU	Intense Blue color custom front	X	p65
 KFXJ-GP	Polar Grey color custom front	X	p65
 KFXJ-GLITTER	Black Glitter color custom front	X	p65
 KFXJ-CUIVRE	Brushed Copper color custom front	X	p65
 KFXJ-ARGENT	Brushed Silver color custom front	X	p65
 KFXJ-OV	Vintage Gold color custom front	X	p65
 KCXJ-NOIR	Black Night Matt color custom body	X	p65

Can't find what you are looking for? Ask us for a color or engraving to your image!

Accessories

Code	Description	Compatibility	Infos
		Vintage	
KLPWSECU-XJ	Secure connection kit for EVX humidifiers	X	p66
KLPR20	20m extension kit for humidifier	X	p66
KPR-XJ	Lift pump kit for H2OX0 - H2OX - EVX0 - EVX - MPC0 - MPCJ	X	p66
KLED-XJ	Plug&play LED kit for H2OX - EVX - MPCJ	X	p65
BNS-30-48-GCH	Low Sound Level Kit for condensing unit GCH GCG 30 to 48	X	p66
BNS-30-230-GCW	Low Sound Kit Water condensing units GCW 30 to 230	X	p66
KWSP-I	WineSupervisor I Kit - Modbus version	X	p65
KWSP-III	WineSupervisor III Kit - Connected version	X	p65
KNET125	Odorless fungicide bactericide cleaning spray 125 ml cellar air conditioning	X	p66
KS2M	Wall Mounting Kit for MPCG, Chill'Loop, Cd Unit GCH GCG GCW	X	p67

Quick selection



WARNING

The selections are only indicative and cannot replace a thermal balance that will consider all the parameters related to the cellar.

CEILING MOUNTED EVPL

SPRITZSYSTEM



The evaporators of the EVPL splits are positioned horizontally on the ceiling to blow on the whole length of the cellar. This position has the advantage of maximizing the space for bottles on the walls.

The design and dark color facilitate the integration into any cellar configuration.

When necessary the **KPM** kits allow the EVPL 82 to 122 to be installed vertically on a wall.

Vintage Finish



This is the all-inclusive solution. On the EVPL range it insures the air conditioning, heating and humidification of the cellar. Optimized for cellars that are too dry, these models are equipped with the HGR% system. It allows humidity to be raised without adding heat and does not require demineralized water or softeners. The use of a KLPWSECU kit will facilitate and secure the connection to water.

Remote control RSF2 new generation



This is the simplest solution to take control of your cellar conditioner. With the wireless radio frequency remote control **RSF2**, no more distance problem, the signal passes through walls. You can control your cellar right up to your kitchen. On Vintage models, it displays temperature and humidity.



WineSupervisor



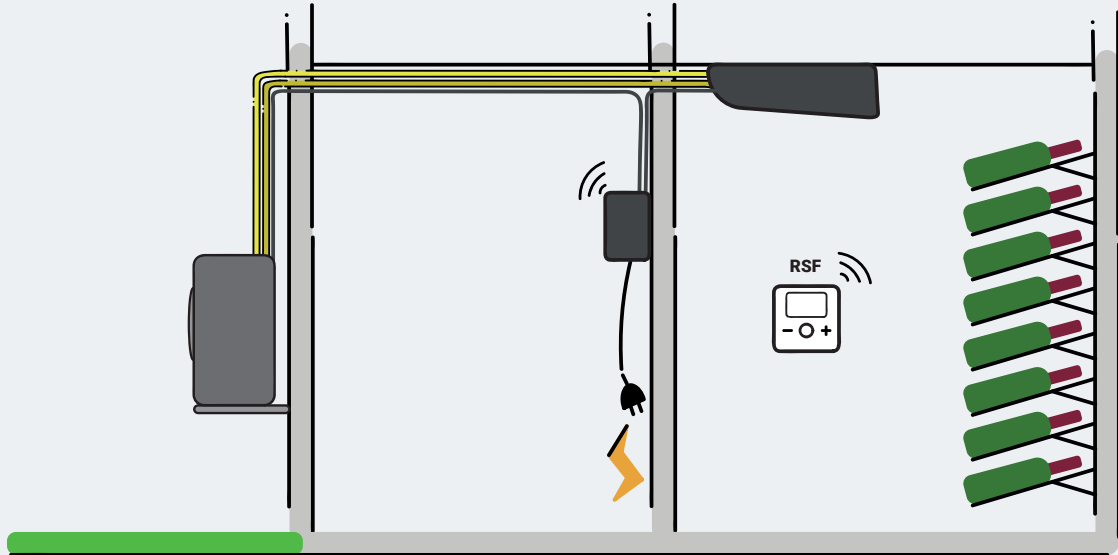
This is the connected solution. Whatever your environment, Friax offers the solution to remain constantly connected to your cellar. Using the KWSP-I kit, you connect to the supervision of your home through a Modbus protocol. The KWSP-III solution allows you to obtain all the essential information about the cellar for life using a tablet or smartphone.



CEILING MOUNTED EVPL

The ceiling mounted split solution

EVPL evaporators are easily integrated into the ceiling of any cellar. The wide power range of the devices makes it possible to air-condition large volumes without ever compromising user comfort.



CEILING MOUNTED EVPL - Description

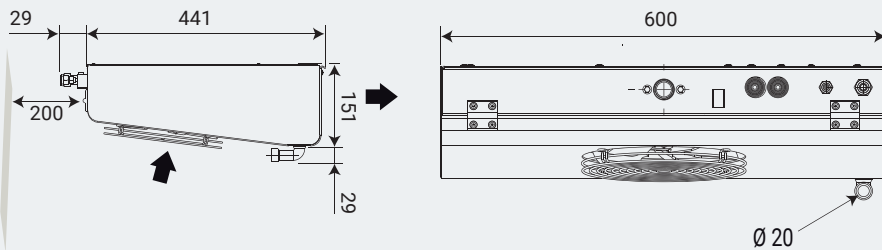
Vintage Evaporator

Cooling – Heating - Humidification

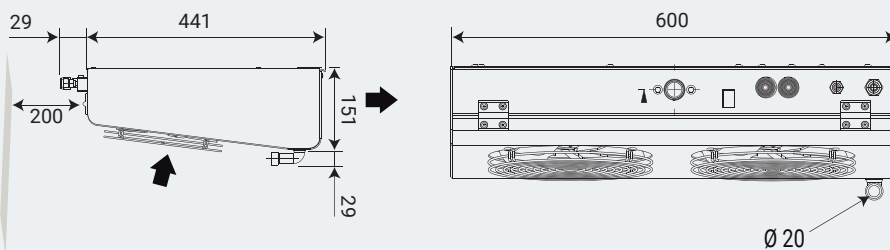
- Ceiling installation in the cellar
- Glossy aluminum body for models 30 and 48 and recyclable ABS for models 82 to 230
- Flare refrigeration connection
- Thermostatic expansion valve
- **CWR** (Cold water recycling)
- ABS connection box
- **RSF2** wireless radio remote control
- Display of temperature, humidity and various functions of the device
- **PDO** Pump Down solenoid valve on models 170 and 230
- **KCH** integrated heating
- **KHGR%** integrated humidifier
- Evaporator Nitrogen pressurized

EVPL evaporator dimensions

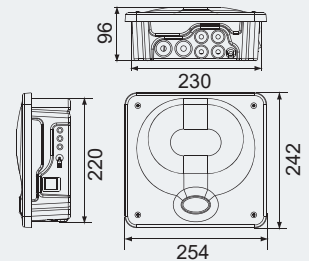
SPC 30



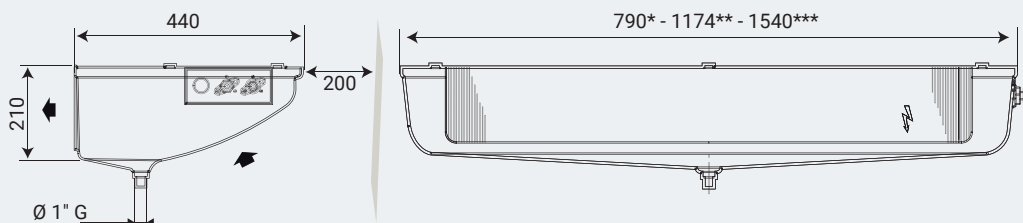
SPC 48



Connection box



SPC 82* - 122** - 170** - 230***



CEILING MOUNTED EVPL

Technical characteristics

<i>Ceiling Mounted EVPL Vintage</i>	SPC	30	48	82	122	170	230
Cooling capacity 12°C / 32°C ext.	W	780	1130	1470	2370	2750	3440
Heating capacity on Vintage	W	850	850	850	1000	1600	2000
<i>EVPL evaporator characteristics</i>	SPC	30	48	82	122	170	230
Voltage	50Hz	230 V/1+T	230 V/1+T	230 V/1+T	230 V/1+T	230 V/1+T	230 V/1+T
Cooling Intensity absorbed	A max	0.3	0.6	0.6	1	1	1.2
Heating Intensity absorbed	A max	3.9	4.1	4.3	5	8	10
Ventilator	Amount	1 x 200	2 x 200	2 x 200	3 x 200	3 x 200	4 x 200
Air flow	m3/h	280	590	650	880	870	1160
Suction gas connection (Flare)	Φ	3/8"	3/8"	3/8"	1/2"	5/8"	5/8"
Liquid gas connection (Flare)	Φ	1/4"	1/4"	1/4"	1/4"	3/8"	3/8"
Net weight	Kg	11.5	13	12.5	18	18	23
Body color		Anthracite	Anthracite	Anthracite	Anthracite	Anthracite	Anthracite
Refrigerant		R513A	R513A	R513A	R513A	R513A	R513A
<i>EVPL Condensing unit characteristics (see p 40)</i>	SPC	30	48	82	122	170	230
Air condensing unit	Type	GCH30	GCH48	GCH82	GCH122	GCH170	GCH230
Ductable air condensing unit	Type	GCG30	GCG48	GCG82	GCH122	GCG170	GCG230
Water condensing unit	Type	GCW30	GCW48	GCW82	GCW122	GCW170	GCW230

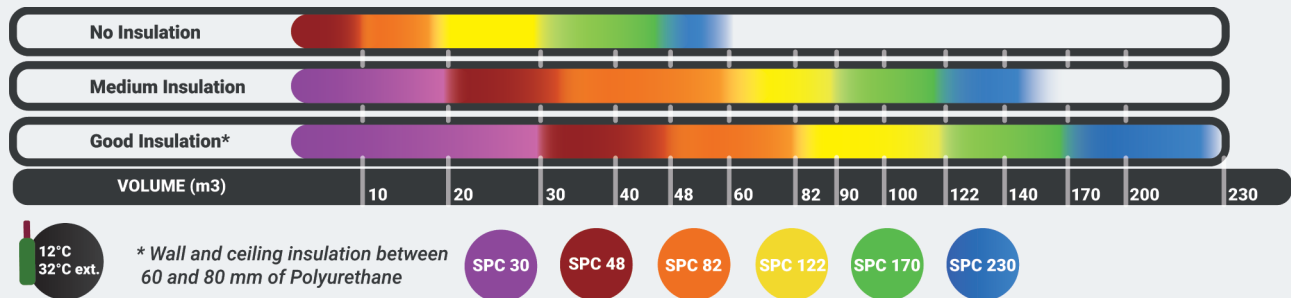
Ceiling mounted Splits System EVPL

EVPL split air condensing unit	item code	SPC30_HEVPL_VTX	SPC48_HEVPL_VTX	SPC82_HEVPL_VTX	SPC122_HEVPL_VTX	SPC170_HEVPL_VTX	SPC230_HEVPL_VTX
EVPL split ductable air condensing unit	item code	SPC30_GEVPL_VTX	SPC48_GEVPL_VTX	SPC82_GEVPL_VTX	SPC122_GEVPL_VTX	SPC170_GEVPL_VTX	SPC230_GEVPL_VTX
EVPL split water condensing unit	item code	SPC30_WEVPL_VTX	SPC48_WEVPL_VTX	SPC82_WEVPL_VTX	SPC122_WEVPL_VTX	SPC170_WEVPL_VTX	SPC230_WEVPL_VTX

Accessories

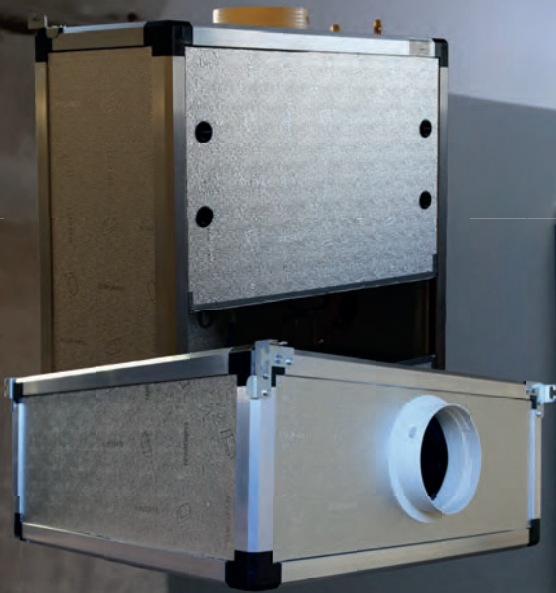
Code	Description	Compatibility		Infos
		Vintage		
KLPWSECU	Secure connection kit for humidifier	X		p66
KLPR20	20m extension kit for humidifier	X		p66
KPR	Lift pump	X		p66
KPM82-122	Wall mounting kit for 82 to 122 evaporators	X		p67
BNS-30-48-GCH	Low Sound Level Kit for condensing unit GCH GCG 30 to 48	X		p66
BNS-82-122-GCH	Low Sound Level Kit for condensing unit GCH GCG 82 to 122	X		p66
BNS-170-230-GCH	Low Sound Level Kit for condensing unit GCH GCG 170 to 230	X		p66
BNS-30-230-GCW	Low Sound Kit water condensing units GCW 30 to 230	X		p66
KWSP-I	WineSupervisor I Kit - Modbus version	X		p65
KWSP-III	WineSupervisor III Kit - Connected version	X		p65
KNET125	Odorless fungicide bactericide cleaning spray 125 ml cellar air conditioning	X		p66
KS2M	Wall Mounting Kit for MPCG, Chill'Loop, Cd Unit GCH GCG GCW	X		p67

Quick selection



WARNING

The selections are only indicative and cannot replace a thermal balance that will consider all the parameters related to the cellar.

DUCTABLE EVG / EVI

A discreet solution that wannah from your sight ...

The evaporators of the EVG ducted ceiling splits and EVI consoles are easily integrated inside or outside of spaces where aesthetics is privileged.

This type of invisible and silent air conditioner will provide additional comfort in the cellar thanks to its indoor unit designed to be installed with a duct network. The variety of dimensions and the many layout possibilities facilitate their integration into spaces of different styles.

Vintage Finish

This is the all-inclusive solution. On the **EVG** and **EVI** it insures the air conditioning, heating and humidification of the cellar. Optimized for cellars that are too dry, these models are equipped with the **HGR%** system. It allows humidity to be raised without adding heat and does not require demineralized water or softeners. The use of a **KLPWSECU** kit will facilitate and secure the connection to water.

Remote control RSF2 new generation

This is the simplest solution to take control of your cellar conditioner. With the wireless radio frequency remote control **RSF2**, no more distance problem, the signal passes through walls. You can control your cellar right up to your kitchen. On Vintage models, it displays temperature and humidity.

***WineSupervisor***

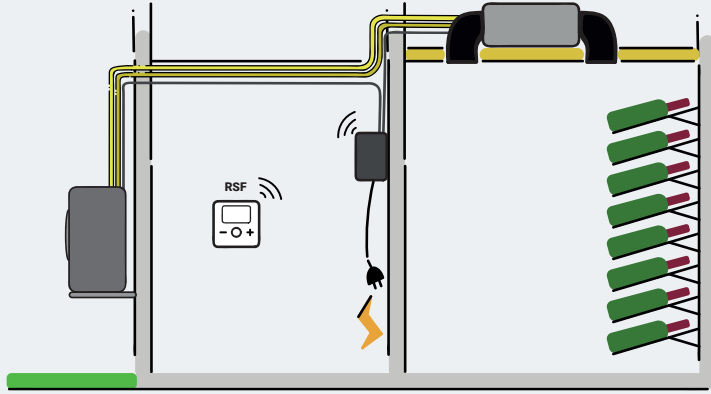
This is the connected solution. Whatever your environment, Friax offers the solution to remain constantly connected to your cellar. Using the **KWSP-I** kit, you connect to the supervision of your home through a Modbus protocol. The **KWSP-III** solution allows you to obtain all the essential information about the cellar for life using a tablet or smartphone.



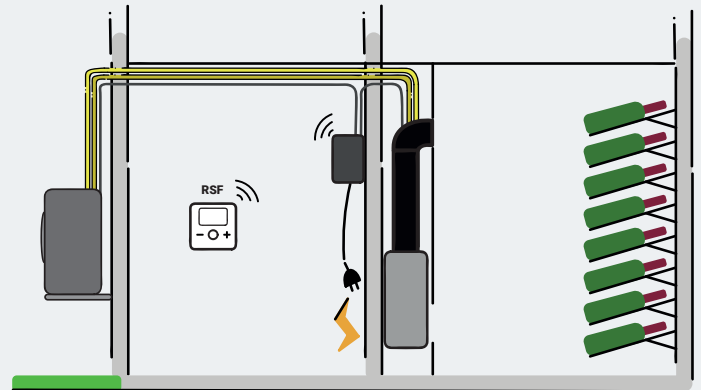
DUCTABLE EVG / EVI - Installation possibilities

Dress the EVG and EVI evaporators and they blend into the cellar environment: they are invisible and silent! The wide power range of the range allows you to air-condition large volumes without ever compromising user comfort.

Horizontal ductable evaporateur EVG

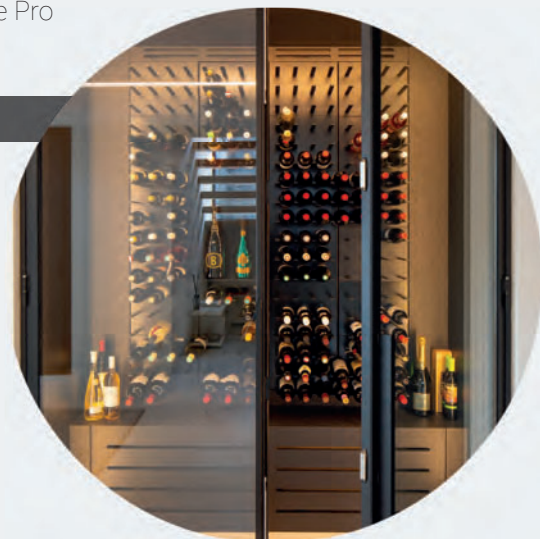
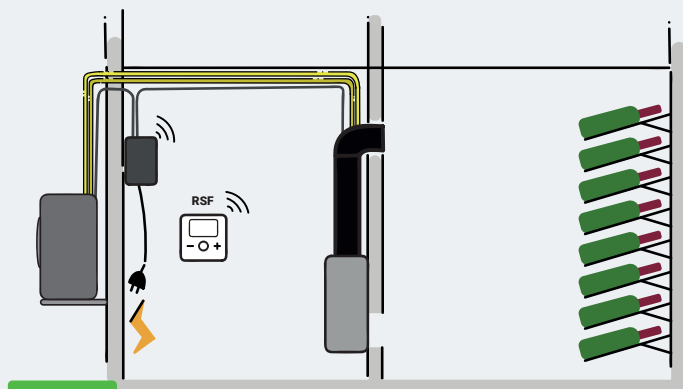


Vertical ductable evaporateur EVI - IN version*



*The EVI are supplied as standard in the IN configuration. Simply swap the removable panels to put them in the OUT configuration. Download the assembly instructions in the Pro area of the friax.fr website.

Vertical ductable evaporateur EVI - OUT version*



DUCTABLE EVG / EVI - Description

Vintage Evaporator

Cooling – Heating – Humidification

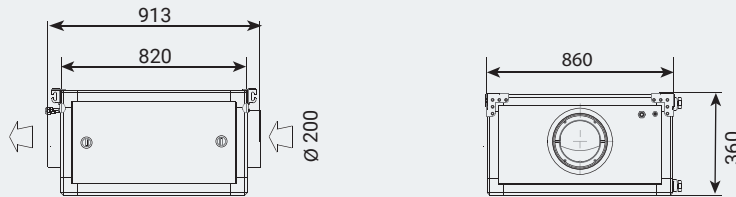
- Aluminum frame with thermal break
- Aluminized polyurethane panels
- EVI supplied as standard in In version (Out version by reversing the panels)
- Thermostatic expansion valve
- CWR (Cold water recycling)
- Variable speed ventilation
- RSF2 wireless radio remote control
- Display of temperature, humidity and various functions of the device
- KCH integrated heating
- KHGR% integrated humidifier
- Evaporator Nitrogen pressurized

EVG | Evaporator dimensions

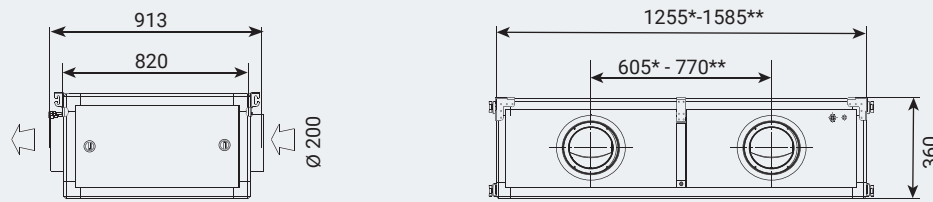
SPC 30 - 48



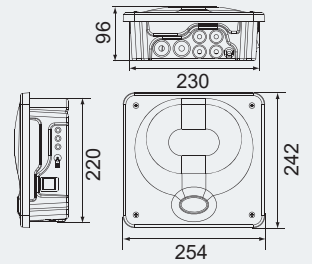
SPC 82 - 122



SPC 170* - 230**

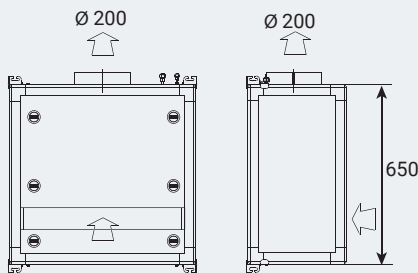


Connection box

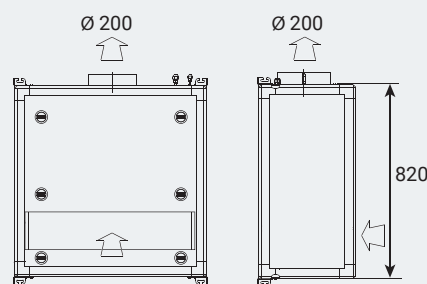


EVI | Evaporator dimensions

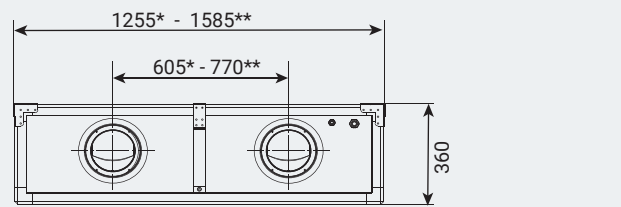
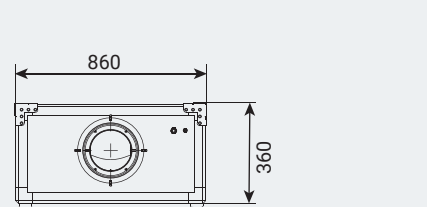
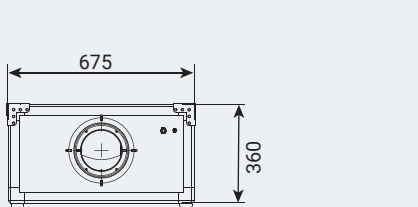
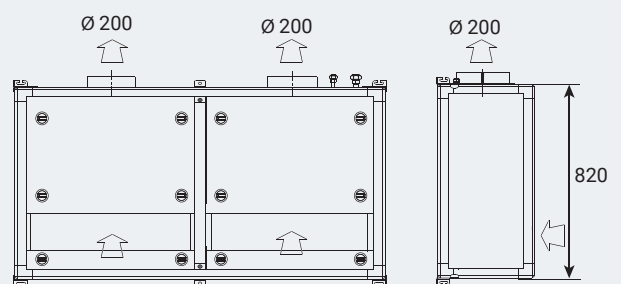
SPC 30 - 48



SPC 82 - 122



SPC 170* - 230**



DUCTABLE EVG / EVI

Technical characteristics

<i>Ductable EVG/EVI Vintage</i>	SPC	30	48	82	122	170	230
Cooling capacity 12°C / 32°C ext.	W	780	1130	1470	2370	2750	3440
Heating capacity on Vintage	W	800	800	850	1000	1600	2000
<i>EVG/EVI evaporator characteristics</i>	SPC	30	48	82	122	170	230
Tension	50Hz	230 V/1+T	230 V/1+T	230 V/1+T	230 V/1+T	230 V/1+T	230 V/1+T
Cooling Intensity absorbed	A max	1.4	1.4	1.4	1.4	2.9	2.9
Intensité absorbée chaud	A max	4.9	4.9	5.1	5.8	10	11.7
Fan	Amount	1	1	1	1	2	2
Air Flow	m3/h	310	490	560	580	1075	1100
Suction gas connection (Flare)	Φ	3/8"	3/8"	3/8"	1/2"	5/8"	5/8"
Liquid gas connection (Flare)	Φ	1/4"	1/4"	1/4"	1/4"	3/8"	3/8"
Net weight	Kg	26	26	32	36	48	56
Body color		Aluminium	Aluminium	Aluminium	Aluminium	Aluminium	Aluminium
Refrigerant		R513A	R513A	R513A	R513A	R513A	R513A
Max available static pressure	Pa	100	100	100	100	100	100
<i>EVG/EVI Condensing unit characteristics (see p 40)</i>		30	48	82	122	170	230
Air condensing unit	Type	GCH30	GCH48	GCH82	GCH122	GCH170	GCH230
Ductable air condensing unit	Type	GCG30	GCG48	GCG82	GCH122	GCG170	GCG230
Water condensing unit	Type	GCW30	GCW48	GCW82	GCW122	GCW170	GCW230

Horizontal ductable evaporator splits system EVG Vintage

EVG split air condensing unit	item code	SPC30_HEVG_VTX	SPC48_HEVG_VTX	SPC82_HEVG_VTX	SPC122_HEVG_VTX	SPC170_HEVG_VTX	SPC230_HEVG_VTX
EVG split ductable air condensing unit	item code	SPC30_GEVG_VTX	SPC48_GEVG_VTX	SPC82_GEVG_VTX	SPC122_GEVG_VTX	SPC170_GEVG_VTX	SPC230_GEVG_VTX
EVG split water condensing unit	item code	SPC30_WEVG_VTX	SPC48_WEVG_VTX	SPC82_WEVG_VTX	SPC122_WEVG_VTX	SPC170_WEVG_VTX	SPC230_WEVG_VTX

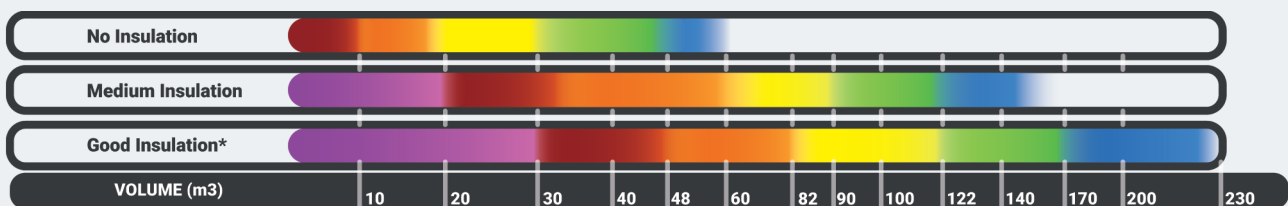
Vertical ductable evaporator splits system EVI

EVI split air condensing unit	item code	SPC30_HEVI_VTX	SPC48_HEVI_VTX	SPC82_HEVI_VTX	SPC122_HEVI_VTX	SPC170_HEVI_VTX	SPC230_HEVI_VTX
EVI split ductable air condensing unit	item code	SPC30_GEVI_VTX	SPC48_GEVI_VTX	SPC82_GEVI_VTX	SPC122_GEVI_VTX	SPC170_GEVI_VTX	SPC230_GEVI_VTX
EVI split water condensing unit	item code	SPC30_WEVI_VTX	SPC48_WEVI_VTX	SPC82_WEVI_VTX	SPC122_WEVI_VTX	SPC170_WEVI_VTX	SPC230_WEVI_VTX

Accessories

Code	Description	Compatibility		Infos
		Vintage		
KLPWSECU	Secure connection kit for humidifier	X		p66
KLPR20	20m extension kit for humidifier	X		p66
KPR	Lift pump	X		p66
BNS-30-48-GCH	Low Sound Level Kit for condensing unit GCH GCG 30 to 48	X		p67
BNS-82-122-GCH	Low Sound Level Kit for condensing unit GCH GCG 82 to 122	X		p66
BNS-170-230-GCH	Low Sound Level Kit for condensing unit GCH GCG 170 to 230	X		p66
BNS-30-230-GCW	Low Sound Kit water condensing units GCW 30 to 230	X		p66
KWSP-I	WineSupervisor I Kit - Modbus version	X		p66
KWSP-III	WineSupervisor III Kit - Connected version	X		p65
KNET125	Odorless fungicide bactericide cleaning spray 125 ml cellar air conditioning	X		p65
KS2M	Wall Mounting Kit for MPCG, Chill'Loop, Cd Unit GCH GCG GCW	X		p66
	Ducting accessories for EVG and EVI	X		p67 - p68

Quick selection



12°C
32°C ext.

* Wall and ceiling insulation between 60 and 80 mm of Polyurethane

SPC 30 SPC 48 SPC 82 SPC 122 SPC 170 SPC 230

WARNING

The selections are only indicative and cannot replace a thermal balance that will consider all the parameters related to the cellar.



The evaporators of the EVA2 splits have been specially developed to equip your custom cabinets. These devices respond to the current trend, in catering and in the home, of presenting wine bottles on large wall surfaces - without significantly encroaching on the exhibition room. This way, wine lovers can make the most of their collection.

EVA evaporators blend into the atmosphere of your living rooms! Friax splits system are based on the most modern technologies to allow for silence and energy efficiency. Once installed in the cellar, you will forget it ...

Céos Finish



It is the most complete solution on **EVA2**. It performs the air conditioning and humidification functions of the cellar. Optimized for cellars and cabinets that are too dry, these models are equipped with the **HGR%** system. It allows humidity to rise without adding heat and does not require demineralised water or a softener. The use of a **KLPWSECU** kit will facilitate and secure the connection on the water.

Remote control RSF2 new generation



This is the simplest solution to take control of your cellar conditioner. With the wireless radio frequency remote control **RSF2**, no more distance problem, the signal passes through walls. You can control your cellar right up to your kitchen. On Céos models, it displays temperature and humidity.



WineSupervisor



This is the connected solution. Whatever your environment, Friax offers the solution to remain constantly connected to your cellar. Using the **KWSP-I** kit, you connect to the supervision of your home through a Modbus protocol. The **KWSP-III** solution allows you to obtain all the essential information about the cellar for life using a tablet or smartphone.



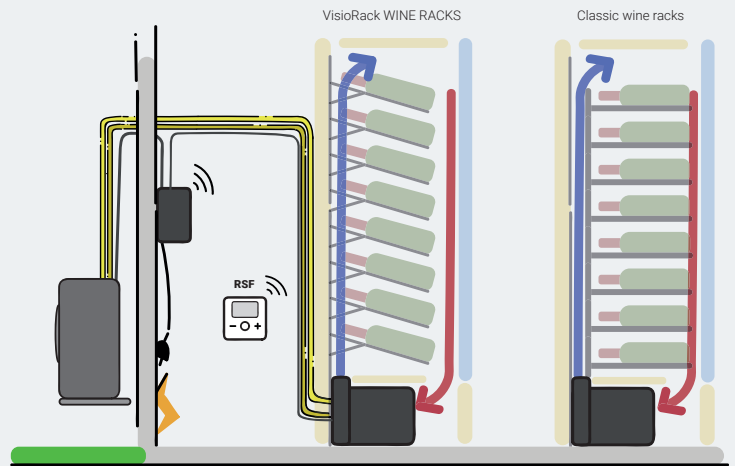
CABINET EVA2

These devices have been developed to fit better into the smallest spaces.

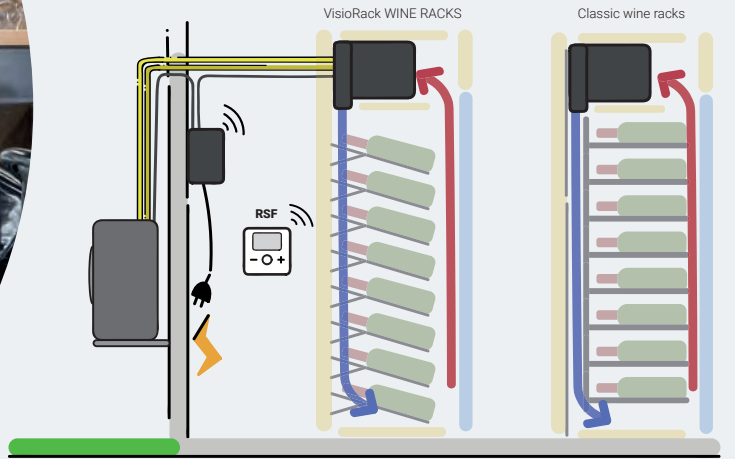
Be creative, EVA2 will fit into all your cupboard, showcase and small cellar projects. The very compact EVA2 evaporator is designed to equip furniture from a depth of **350 mm**. EC ventilation makes it possible to adjust the flow to the pressure drop of the cabinet in which it is installed and this directly with the remote control. The retractable diffuser turns 180° depending on whether the appliance is positioned on the baseboard or on the cornice in the wine cabinet. Very narrow, it allows blowing in a double bottom in a cabinet. The condensate tray is mounted on slides to facilitate cleaning during maintenance operations.

Bodywork in glossy black polycarbonate standard, EVA2 can, on request, be dressed in a multitude of colors and materials. Do not hesitate to consult us.

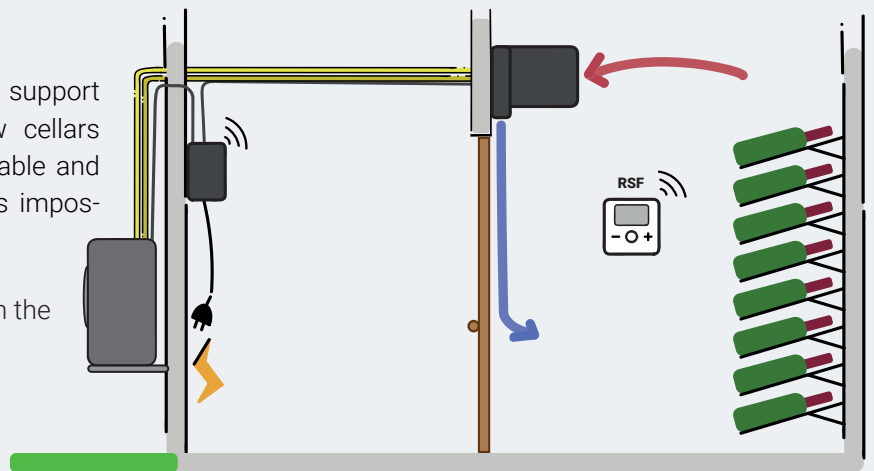
Installation possibilities



Air blowing Up



Air blowing Down



Wine Cellar, air blowing Down

EVA2 associated with its invisible wall support KPM-EVA2 solves the problem of narrow cellars where a front air supply can be uncomfortable and where the installation of a ducted device is impossible.

Provide for the installation of a cover panel in the lower part in the case of wall mounting. (e.g. KPM-EVA-HINOIR for the standard black bodywork)

CABINET EVA2 - Description

Céos Evaporator

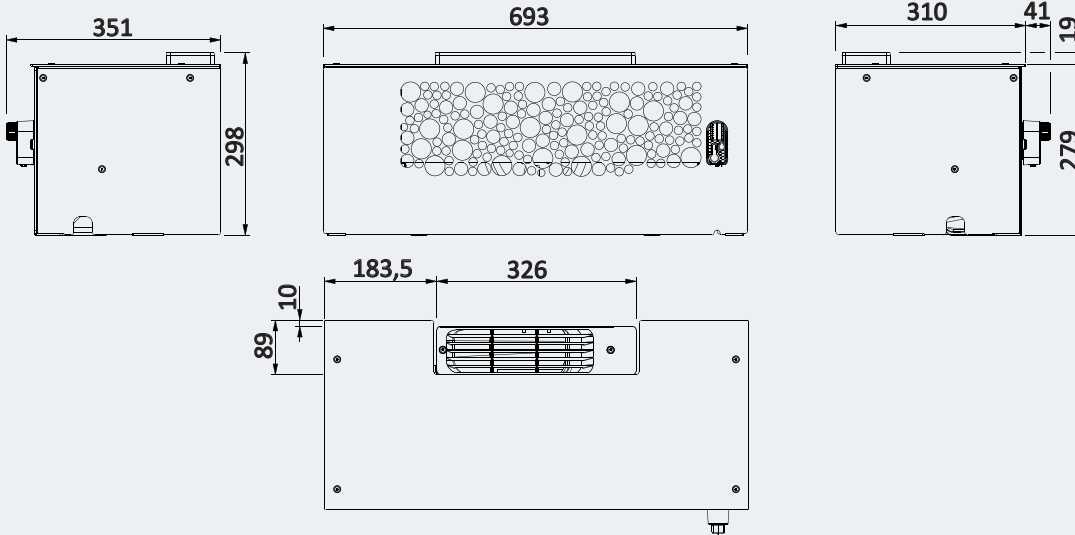
Cooling - Humidification

- PMMA bodywork
- Flare refrigeration connection outside
- Removable condensate tray
- Stainless steel thermostatic expansion valve
- **CWR** (Cold water recycling) stabilization of humidity
- Variable speed EC ventilation
- **RSF2** wireless radio remote control
- Display of temperature, humidity and various functions of the device
- Diffuser adjustable up or down (Standard configuration: up)
- **KHGR%** integrated humidifier
- Evaporator Nitrogen pressurized

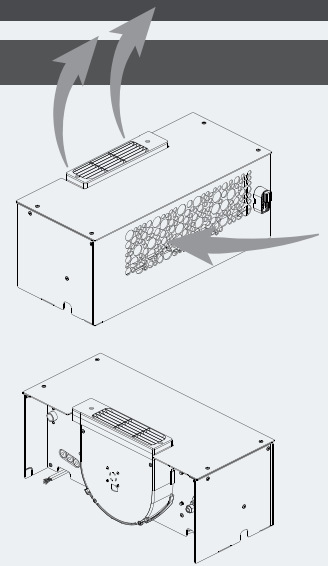
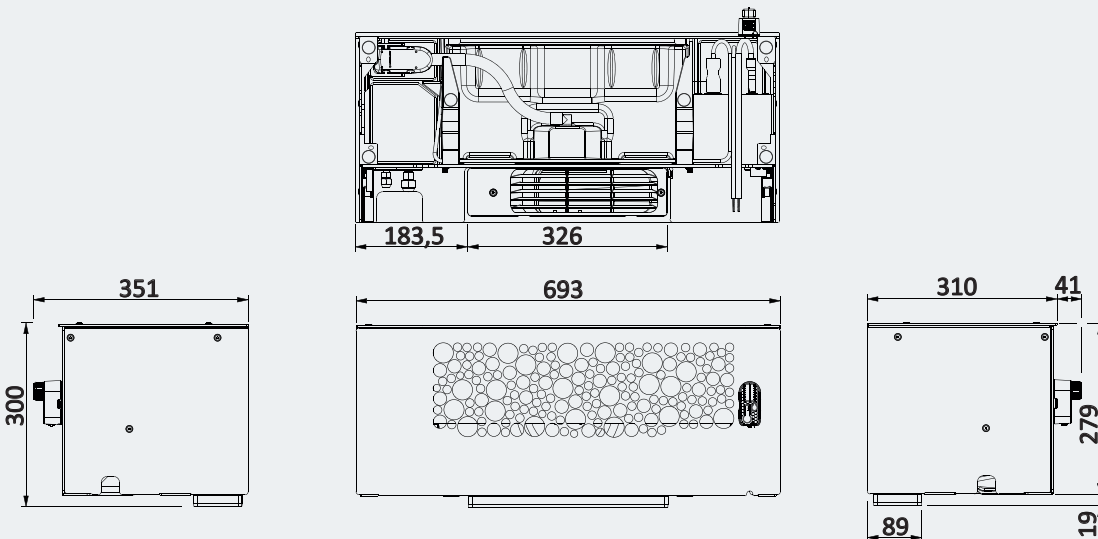
Dimensions of EVA2 evaporators

SPC 30 - 48 - 82 - 122*- 170*

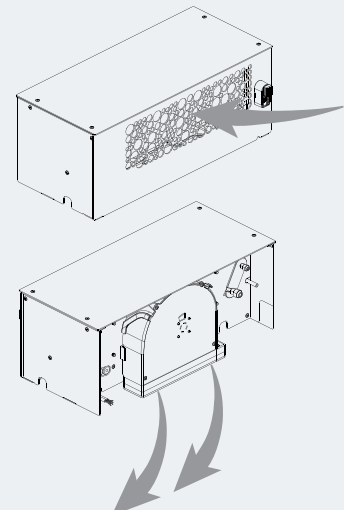
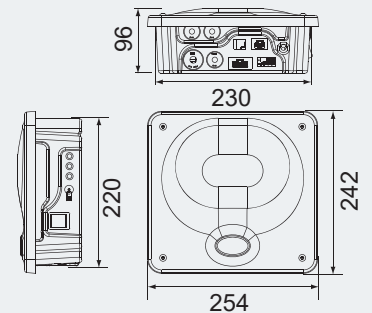
Configuration air blowing up



Configuration air blowing down



Boitier de raccordement



CABINET EVA2

Technical characteristics

<i>Cabinet EVA Céos</i>	SPC	30	48	82	122	170
Cooling capacity 12°C / 32°C ext.	W	780	1130	1470	2370	2750
Heating capacity	W	-	-	-	-	-
<i>EVA evaporator characteristics</i>	SPC	30	48	82	122	170
Voltage	50Hz	230 V/1+T	230 V/1+T	230 V/1+T	230 V/1+T	230 V/1+T
Intensity absorbed	A max	0.8	0.8	0.8	1.6	1.6
Evaporator	Nombre	1	1	1	2	2
Air flow / Evaporator	m3/h	310	490	560	2 x 490	2 x 560
Suction gas connection (Flare)	Φ	3/8"	3/8"	3/8"	2 x 3/8"	2 x 3/8"
Liquid connection (Flare)	Φ	1/4"	1/4"	1/4"	2 x 1/4"	*2 x 1/4" + EVPD 3/8"
Net weight	Kg	9	9	10	2 x 9	2 x 10
Body color		Shiny black	Shiny black	Shiny black	Shiny black	Shiny black
Refrigerant		R513A	R513A	R513A	R513A	R513A
<i>Condensing unit EVA2 (see p40)</i>	SPC	30	48	82	122	170
Air condensing unit	Type	GCH30	GCH48	GCH82	GCH122	GCH170
Ductable air condensing unit	Type	GCG30	GCG48	GCG82	GCH122	GCG170
Water condensing unit	Type	GCW30	GCW48	GCW82	GCW122	GCW170

Cabinet evaporator splits system EVA2 Céos

EVA2 split air condensing unit	item code	SPC30_HEVA2_CSX	SPC48_HEVA2_CSX	SPC82_HEVA2_CSX	SPC122_HEVA2_CSX	SPC170_HEVA2_CSX
EVA2 split ductable air condensing unit	item code	SPC30_GEVA2_CSX	SPC48_GEVA2_CSX	SPC82_GEVA2_CSX	SPC122_GEVA2_CSX	SPC170_GEVA2_CSX
EVA2 split water condensing unit	item code	SPC30_WEVA2_CSX	SPC48_WEVA2_CSX	SPC82_WEVA2_CSX	SPC122_WEVA2_CSX	SPC170_WEVA2_CSX

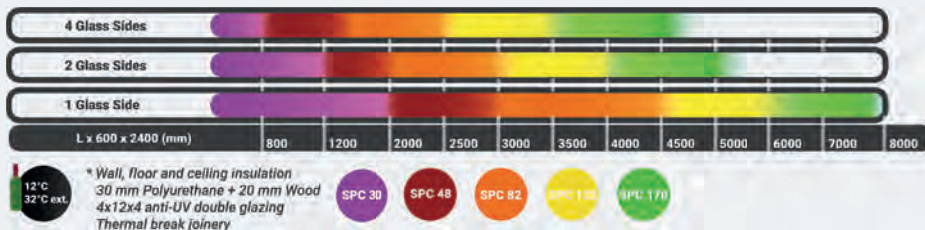
*EVPD 3/8" : Pump down solenoid valve

Accessories

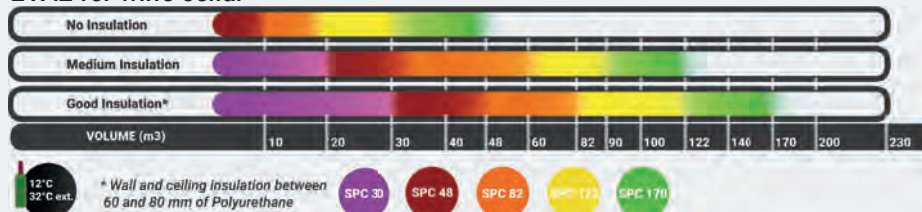
Code	Description	Compatibility	Infos
		Céos	
KLPWSECU	Secure connection kit for humidifier	X	p66
KLPR20	20m extension kit for humidifier	X	p66
KPR-EVAH2OA	Lift pump kit for EVA2 & H2OA	X	p66
BNS-30-48-GCH	Low Sound Level Kit for condensing unit GCH GCG 30 to 48	X	p66
BNS-82-122-GCH	Low Sound Level Kit for condensing unit GCH GCG 82 to 122	X	p66
BNS-170-230-GCH	Low Sound Level Kit for condensing unit GCH GCG 170 to 230	X	p66
BNS-30-230-GCW	Low Sound Kit water condensing units GCW 30 to 230	X	p66
KWSP-I	WineSupervisor I Kit - Modbus version	X	p65
KWSP-III	WineSupervisor III Kit - Connected version	X	p65
KS2M	Wall Mounting Kit for MPCG, Chill'Loop, Cd Unit GCH GCG GCW	X	p67
KPM-EVA2	Invisible wall mounting kit for EVA2 evaporator or H2OA	X	p67
KPM-EVA2-HINOIR	Lower casing for EVA2 and H2OA wall mounting	X	p67
KNET125	Odorless fungicide bactericide cleaning spray 125 ml cellar air conditioning	X	p66

Quick selection

EVA2 for custom wine cabinet



EVA2 for wine cellar



WARNING

The selections are only indicative and cannot replace a thermal balance that will consider all the parameters related to the cellar.



YOUR DISTRIBUTOR

RANGE 20 years

Cover photo

Cave Le Mas les Eydins by Alexandra and Christophe Bacquié - 84 Bonnieux - France

VisioRack cellar storage by Friax

SPC 82 EVA Vintage air conditioner

231 / 233 Rue de la Prairie
73420 Voglans – FRANCE

www.friax.fr

+33 (0)4 79 34 91 84
info@friax.fr