

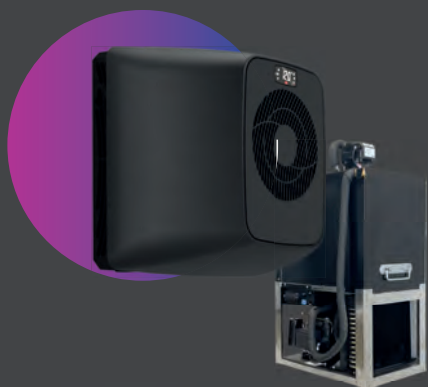


The range **Onyx**

Friax at the best price

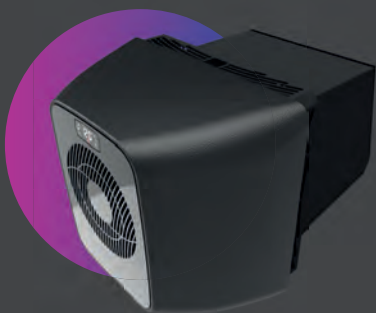


Onyx is the unique range that will allow you to benefit from the know-how, design and technology of Friax at the best price.



***Chill'Loop Wall-Mounted H2OXO Onyx...p 10***

Chill' loop H2OXO ONYX wall-mounted offers the flexibility of a split system without the constraints of a refrigeration installation at the best price.



***MPCO Onyx Crossing Monobloc ...p 12***

MPCO symbolizes the configuration at the origin of the Friax air conditioner range in 2004, the technology of 2024 in addition. Its attractive price does not detract from its cooling capacity but adds to its charm.



***EVXO Onyx Wall Split System ...p 14***

The wall-mounted SPC EVXO ONYX Split System offers the possibility of moving the outdoor unit up to 20 m away from the evaporator in the cellar, or even further under certain conditions, and at the best price.

## WALL MOUNTED H2OXO Onyx



The wall-mounted **Chill'loop H2OXO Onyx** offers the flexibility of a split system without the constraints of a refrigeration installation.

Installing **H2OXO Onyx** for air conditioning your cellar means enjoying the simplicity of Chill'loop Friax technology at **the best price**.



### Onyx finish

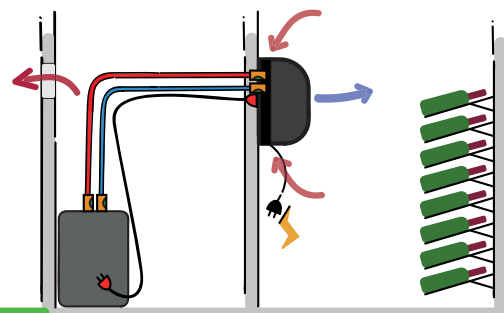
The Chill'Loop **H2OXO Onyx** air conditioner is configured to keep your cellar at the ideal wine storage temperature during periods of high heat.

Faithful to the original design of the Chill'Loop Friax, it allows you to cool without dehumidifying the room where it is installed. This is made possible by precise sizing of the refrigeration system and the use of the CWR (Cold Water Recycling) tray specially designed to recycle the natural condensation water from the cellar. Be careful, however, cellars that are naturally too dry will not be re-humidified. The latest generation white LED electronic controller, positioned on the front of the refrigerator in the cellar, regulates the internal temperature of the cellar and the water temperature of the unit in all seasons .

### Easy to install

**Chill'Loop** is like a split system, with an indoor unit in the cellar and a remote group, but the fluid used to cool the cellar is simply iced water instead of a refrigerant gas. It must be installed in a ventilated, frost-free room that is sufficiently spacious, such as a garage or crawl space. The connection between the two units is made using a **KLCL** connection kit. This includes the tubes, quick connectors, electrical connections and the pump, the power of which varies depending on the length chosen.

Once installed, simply add water, plug in and you're done.



### Sustainable design

To participate in the effort to protect our planet, **Chill'loop** uses the most modern and energy-efficient ventilation technologies. The R290 refrigerant charge in the group's refrigeration circuit reduces the impact of the air conditioner on global warming and the heat transfer fluid used to air condition your cellar is nothing more or less than water (**H2O**).



## WALL MOUNTED H2OXO Onyx

### Onyx Cold only

- Wall-mounted cooling system
  - textured night black ABS bodywork
  - Glossy black front
  - Gravity condensate drain in or out
  - CWR (Cold water recycling)
  - Power cord with plug
  - Low consumption EC refrigeration fans with variable speed
  - Led regulator on the front with display of temperature, alarms and device functions
- Cellar exterior unit
  - Black epoxy paint bodywork
  - R290 fluid with no impact on global warming
- KLCL0 connection kit (To be added as an accessory)
  - Two lengths of insulated pipe corresponding to the distance between the H2OX and the unit
  - Electrical connections equipped with connectors to be positioned between the unit and the refrigerant.
  - Hydraulic connectors to connect the different elements without tools.
  - A chilled water pump sized according to the length of the KLCL0 connection kit.

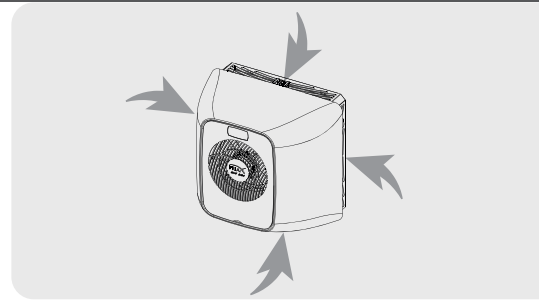
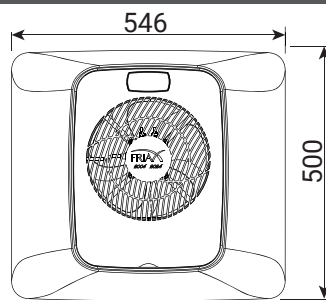
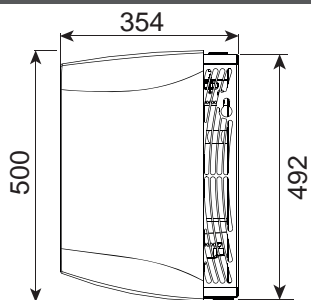
	Chill' loop	50
Cooling caoacity 12°C / 35°C ext.	W	1050
<i>Caractéristiques électriques</i>		
	Chill' loop	50
Voltage	50Hz	230 V/1+T
Absorbed intensity	A max	3,6
<i>H2OXO refrigerant features</i>		
	H2OXO	50
Air flow in the cellar	m3/h	440
Body / Front Color		Black / Black
Fluid		H2O
Weight	kg	18
<i>Group characteristics</i>		
	H2OXO	50
Water capacity	L	30
Body color		Noir
Refrigerant		R290
Empty group weight	kg	39
Heat rejection	W	1420
Group air flow	m3/h	350
<b>1 - Chill' loop H2OXO Onyx</b> <i>Item code</i> <b>CL50_H2OXO_ONY</b>		
<b>2 - Connection kits</b> <i>Item code</i>		
<b>4 m</b>	Accessories + Pump 1 + Connections (length 4 m)	<b>KLCL0-4-P1</b>
<b>6 m</b>	Accessories + Pump 1 + Connections (length 6 m)	<b>KLCL0-6-P1</b>
<b>8 m</b>	Accessories + Pump 1 + Connections (length 8 m)	<b>KLCL0-8-P1</b>
<b>10 m</b>	Accessories + Pump 2 + Connections (length 10 m)	<b>KLCL0-10-P2</b>
<b>12 m</b>	Accessories + Pump 2 + Connections (length 12 m)	<b>KLCL0-12-P2</b>
<b>16 m</b>	Accessories + Pump 2 + Connections (length 16 m)	<b>KLCL0-16-P2</b>

### Accessories

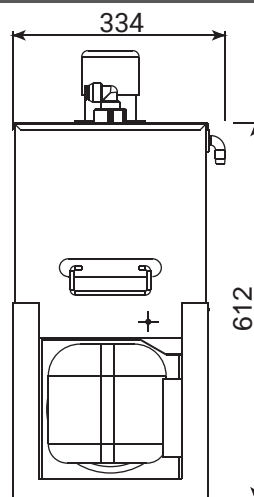
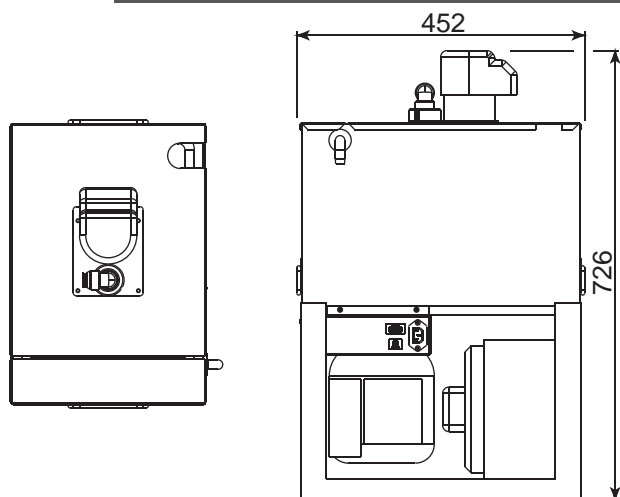
Code	Description	Compatibilité Onyx	Infos
KPR-XO	Lift pump kit for MPCO	X	p66
KNET125	Odorless fungicide bactericide cleaning spray 125 ml cellar air conditioning	X	p66
KS2M	Wall Mounting Kit for MPCG, Chill'Loop, Cd Unit GCH GCG GCW	X	p67

Quick selection Onyx range: See selection grid on page 13

### Cooling dimensions



### Group dimensions





Installing **MPCO Onyx** for air conditioning in your cellar means taking advantage of the technology, know-how and design of a Friax **at the best price.**

Anniversary device specially designed for the 20th anniversary of the brand.

### Onyx finish



The MPCO Onyx air conditioner is configured to keep your cellar at the ideal wine storage temperature during periods of high heat.

Faithful to the original design of Friax air conditioners, it allows cooling without dehumidifying the room where it is installed. This is made possible thanks to precise sizing of the refrigeration system and the use of the CWR (Cold Water Recycling) tank specially designed to recycle natural condensation water from the cellar. Be careful, however, cellars that are naturally too dry will not be re-humidified.

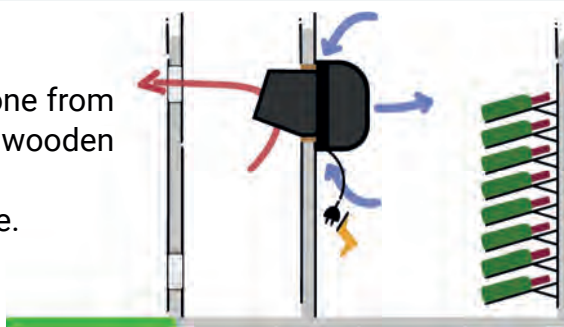
The latest generation white LED electronic controller, positioned on the front, regulates the internal temperature and controls the ventilation speed of the group in all seasons to keep the system in balance whatever the conditions outside the cellar.

### Easy to install



To facilitate assembly, installation is done from inside the cellar directly through the wooden frame supplied with the device.

The MPCO is designed to be easy to use. It requires very little maintenance.



### Sustainable design



To participate in the effort to protect our planet, the MPCO range uses the most modern and least energy-intensive ventilation technologies. The R290 refrigerant charge in the group's refrigeration circuit reduces the impact of the air conditioner on global warming.



## WINDOW MPCO - Description

### Onyx Cold only

- Through wall mounting
- Cellar side textured night black ABS bodywork
- Glossy black front
- Exterior group body black epoxy paint
- Gravity condensate drain in or out
- **CWR** (Cold water recycling)
- Power cord with plug
- Low consumption EC fans with variable speed
- **KPC** Condensing pressure regulation
- Led regulator on the front with display of temperature, alarms and device functions
- Wall mounting frame
- **R290** fluid without impact on global warming

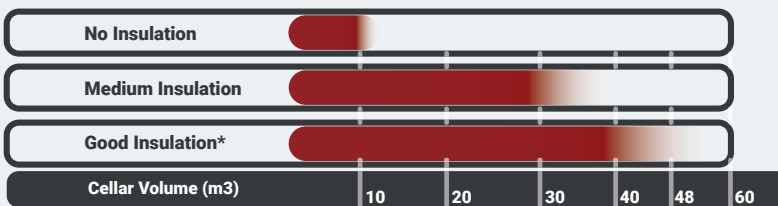
### Technical characteristics

	MPCO	48
Cooling capacity 12°C / 32°C ext.	W	1100
	MPCJ	48
Voltage	50Hz	230 V/1+T
Max cooling Intensity absorbed	A	5.11
Air flow in the cellar	m3/h	442
Sound pressure level at 5m	dbA	45
Net weight	kg	40
Body color		Noir
Refrigerant		R290
<b>MPCO Onyx monobloc</b>	<i>Item code</i>	<b>MPCO48_ONY</b>

### Accessories

Code	Description	Compatibility	Infos
KPR-XO	Lift pump kit for MPCO	Onyx X	p66
KNET125	Odorless fungicide bactericide cleaning spray 125 ml cellar air conditioning	X	p66

### Quick selection

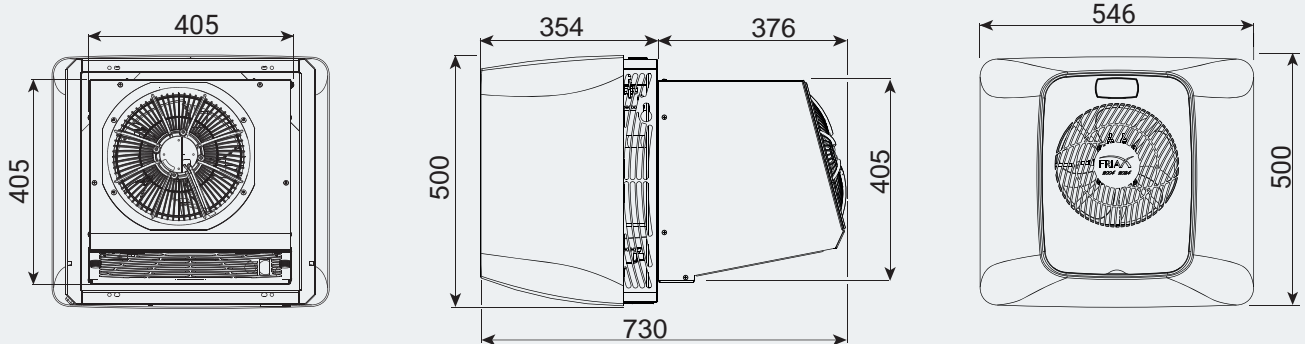


\* Wall and ceiling insulation between 60 and 80 mm of polyurethane

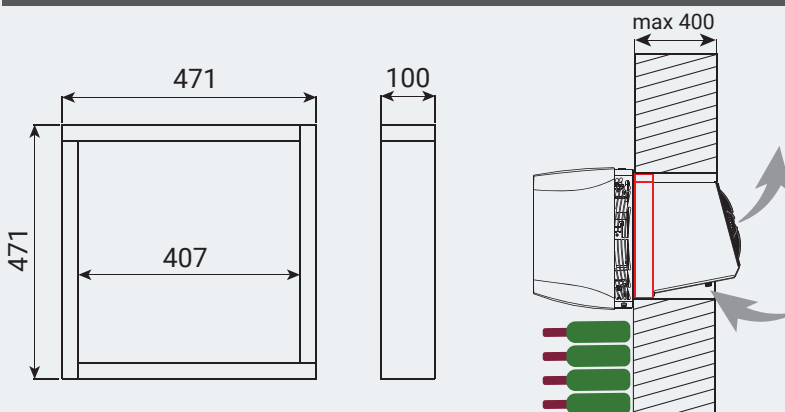
### WARNING

The selections are only indicative and cannot replace a thermal balance that will consider all the parameters related to the cellar.

### Dimensions



### MPCO Wall mounting frame



The MPCO must be installed far enough from obstacles to allow air intake at the periphery against the wall.

## Wall mounted EVXO Onyx

# Split System Onyx

The wall-mounted **SPC EVXO Onyx** Split System offers the possibility of moving the outdoor unit up to 20 m away from the evaporator in the cellar, or even more in certain conditions.

The **SPC EVXO Onyx** for air conditioning your cellar means taking advantage of Friax split technology at the **best price**.

FRIAX

### Onyx finish



The **SPC EVXO Onyx** air conditioner is configured to keep your cellar at the ideal wine storage temperature during periods of high heat.

Faithful to the original design of Friax splits, it allows you to cool without dehumidifying the room where it is installed. This is made possible by precise sizing of the refrigeration system and the use of the CWR (Cold Water Recycling) tank specially designed to recycle the natural condensation water from the cellar. Be careful, however, cellars that are naturally too dry will not be re-humidified.

The latest generation white LED electronic controller, positioned on the front, regulates the internal temperature and controls the ventilation speed of the unit in all seasons to keep the system balanced regardless of the conditions outside the cellar.

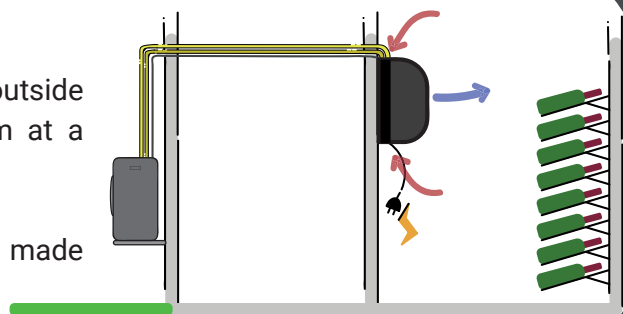
### Easy to install



However, it requires the intervention of a specialist.

The **SPC EVXO Onyx** split system unit is positioned outside the house. It can be installed without any problem at a distance of 20 m from the indoor unit.

The electrical and refrigeration connections are made directly between the evaporator and the unit.



### Sustainable design



To participate in the effort to protect our planet, SPC Onyx uses the most modern and energy-efficient ventilation technologies.

The R513A refrigerant charge in the group's refrigeration circuit reduces the air conditioner's impact on global warming



## Wall mounted EVX0 Onyx

### Onyx Cold only

- Wall-mounted evaporator for cellar mounting
  - Textured night black ABS bodywork
  - Glossy black front
  - Flare refrigerant connection
  - Thermostatic expansion valve
  - Power cord
  - Low consumption EC ventilation
  - Connection terminal block integrated into the evaporator
  - Led regulator on the front with display of the temperature, alarms and functions of the device.
  - Supplied under nitrogen pressure
- Outdoor group
  - Black epoxy paint bodywork
  - R513A fluid

Wall mounted EVX0 split		48
Fridge capacity. 12°C / 32°C ext.	W	1100
Evaporator features	EVX0	48
Voltage	50Hz	230 V/1+T
Cold absorbed intensity	A max	0,8
Fan	Nombre	1
Air flow in the cellar	m3/h	452
Suction gas connection (Flare)	Φ	3/8"
Liquid connection (Flare)	Φ	1/4"
Weight	kg	18
Body / Front Color		Noir / Noir
Group characteristics	GCH	48
Voltage	50Hz	30
Absorbed intensity	A	6
Air flow	m3/h	1250
Sound pressure level at 5m without BNS	dBA	40
Sound pressure level at 5m with BNS	dBA	37
Suction gas connection (Flare)	Φ	3/8"
Liquid gas connection (Flare)	Φ	1/4"
Net weight	Kg	38
Body color		RAL7016 + anodic Grey Natura
Refrigerant		R513A
Preloaded for	m	6

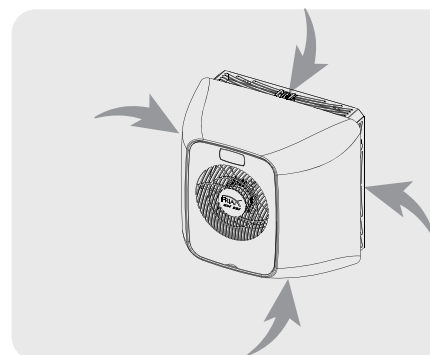
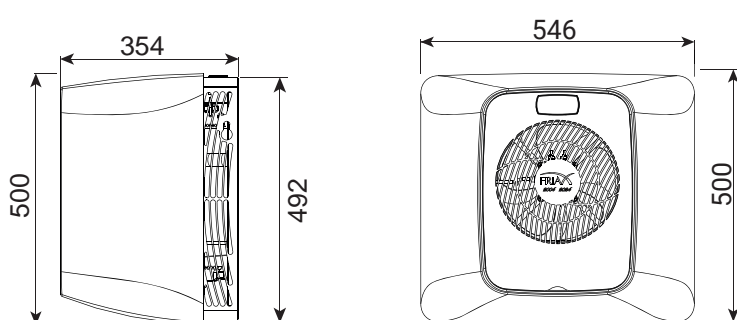
Wall mounted EVX0 Split      Item code      SPC48\_EVX0\_ONY

### Accessoires

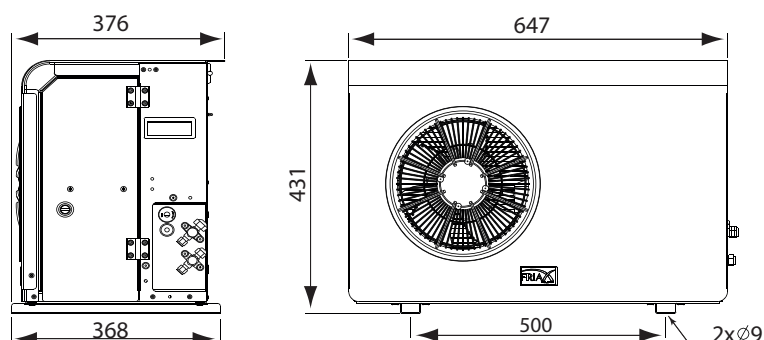
Code	Description	Compatibility	Infos
		Onyx	
KPR-X0	Lift pump kit for MPCO	X	p66
KNET125	Odorless fungicide bactericide cleaning spray 125 ml cellar air conditioning	X	p66
BNS-30-48-GCH	Low Noise Kit for SPC 30 to 48 GCH group	X	p66
KS2M	Wall Mounting Kit for MPCG, Chill'Loop, Cd Unit GCH GCG GCW	X	p67

Quick selection Onyx range: See selection grid on page 13

### Evaporator dimension



### Group dimensions







A unique space to imagine, install, and maintain your customers' cellar.

To facilitate the selection and installation of devices, Friax makes a range of tools available to everyone on the website [www.friax.fr](http://www.friax.fr)

As a professional installer and partner, you benefit from even more free tools thanks to access to the Pro Access.

- Selection tool
- Technical documentation
- Reseller referencing
- Quote
- FAQ
- Ticket Assistance
- Order flyers and catalogs
- Publics Rates

**The Pro Access** contains the answers to all your questions for successful installations.

Make a request now on [pro.friax.fr](http://pro.friax.fr) to get your access.





## Wine cellar air conditioners *MPCO 48 Onyx*



Have a Friax at the best price



**YOUR DISTRIBUTOR**

**RANGE 20 years**

Cover photo

Cave Le Mas les Eydins by Alexandra and Christophe Bacquié - 84 Bonnieux - France

VisioRack cellar storage by Friax

SPC 82 EVA Vintage air conditioner

231 / 233 Rue de la Prairie  
73420 Voglans – FRANCE

**[www.friax.fr](http://www.friax.fr)**

+33 (0)4 79 34 91 84  
[info@friax.fr](mailto:info@friax.fr)